

CISOLIFT

CH1054

Telehandler

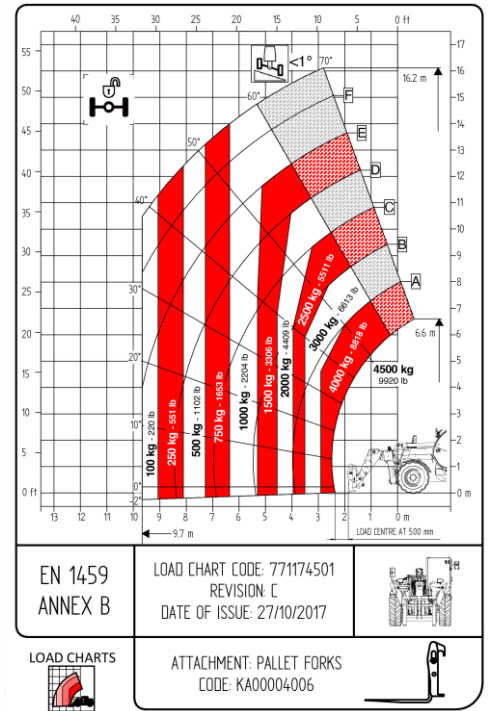
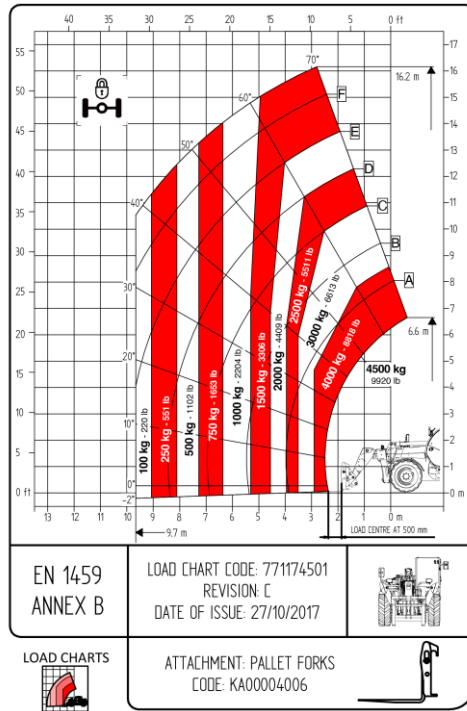
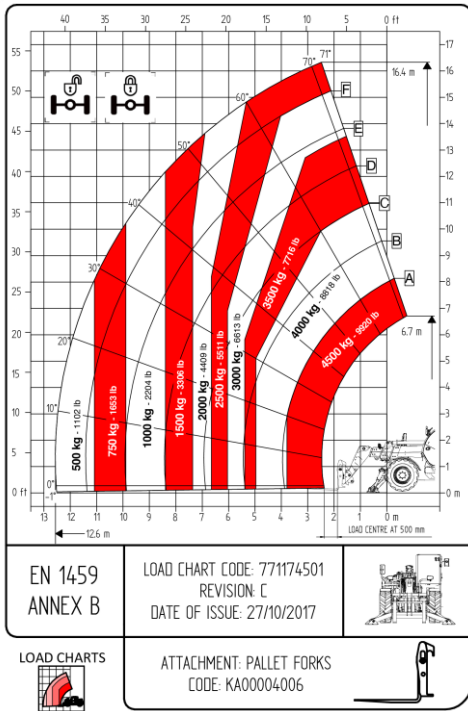
The Cisolift CH1054 is a rugged and high-performance telehandler, ideal for demanding job sites that require high lifting capacity and extended reach.

- 4-wheel drive with 3 steering modes
- Emissions system that operates without urea (DEF-free)
- Hydrostatic transmission for smooth and efficient operation
- Ergonomic cab designed for comfort and optimal visibility
- Front stabilizers for excellent stability on all types of terrain



CISOLIFT 

LOAD CHARTS



TECHNICAL FEATURES

Lifting height	53'10"	16,4 m
Turning radius	13'9"	4,2 m
Lifting capacity	4500 kg	9 920 lb
Length	21'5"	6 520 mm
Width	7'9"	2 360 mm
Height	8'5"	2 560 mm
Width with stabilizers	11'	3 418 mm

Transmission	Hydrostatic two mechanical gears	
Speed	15,5 mph	
Engine Stage V	Deutz 75,3 hp	
Tires	405/70 20	
Emissions treatment system	Without urea	
Energy source	Diesel	
Weight	12 080 kg	26 632 lb