

CISOLIFT

CH9345

Telehandler

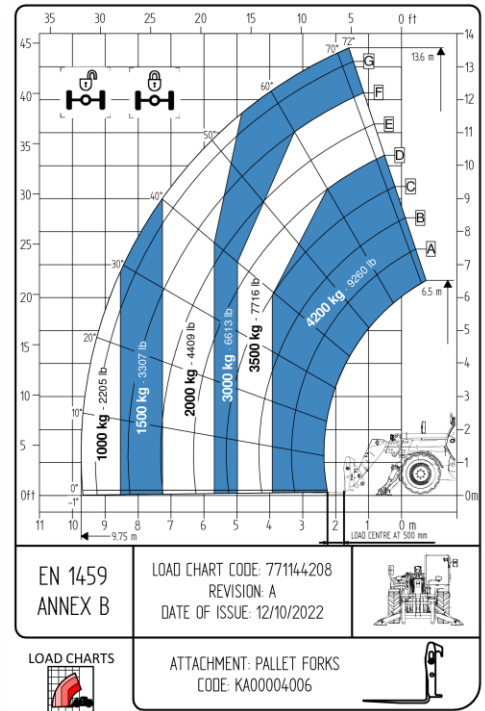
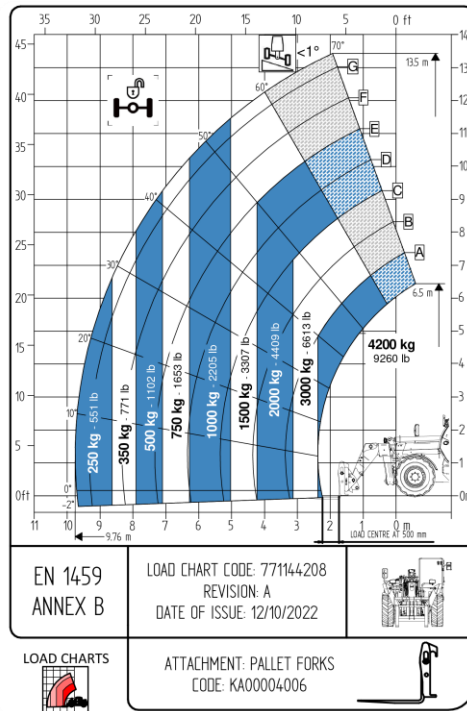
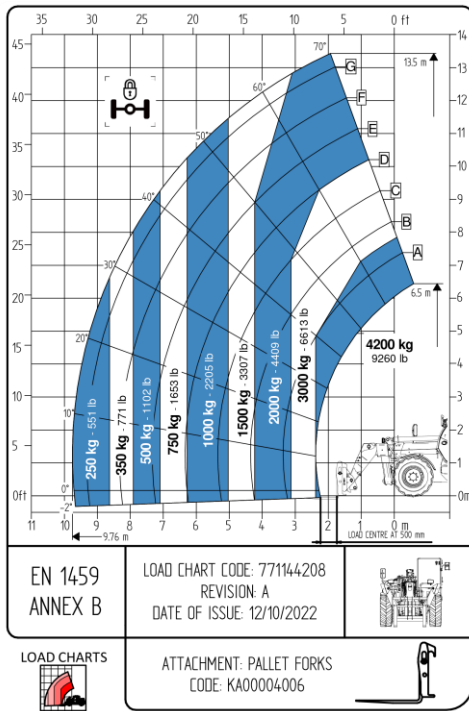
The Cisolift CH9345 is a rugged and high-performance telehandler, ideal for demanding job sites that require high lifting capacity and extended reach.

- 4-wheel drive with 3 steering modes
- Urea-free emissions system
- Hydrostatic transmission for smooth and efficient driving
- Ergonomic cab offering superior comfort and visibility
- Front stabilizers for outstanding stability on all types of terrain



CISOLIFT 

LOAD CHARTS



TECHNICAL FEATURES

Lifting height	44'7"	13,6 m
Turning radius	13'9"	4,2 m
Lifting capacity	4 200 kg	9 259 lb
Length	20'11"	6 370 mm
Width	7'8"	2 331 mm
Height	8'3"	2 500 mm
Width with stabilizers	11'	3 418 mm

Transmission	Hydrostatic single gear	
Speed	15,5 mph	
Engine Stage V	Deutz 75,3 hp	
Tires	405/70 20	
Emissions treatment system	Without urea	
Energy source	Diesel	
Weight	11 000 kg	24 250 lb